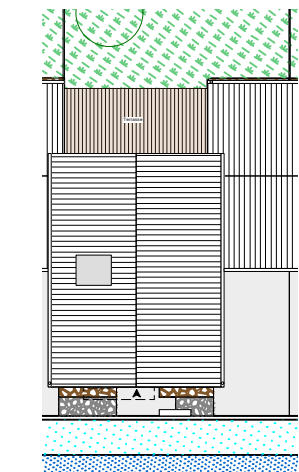
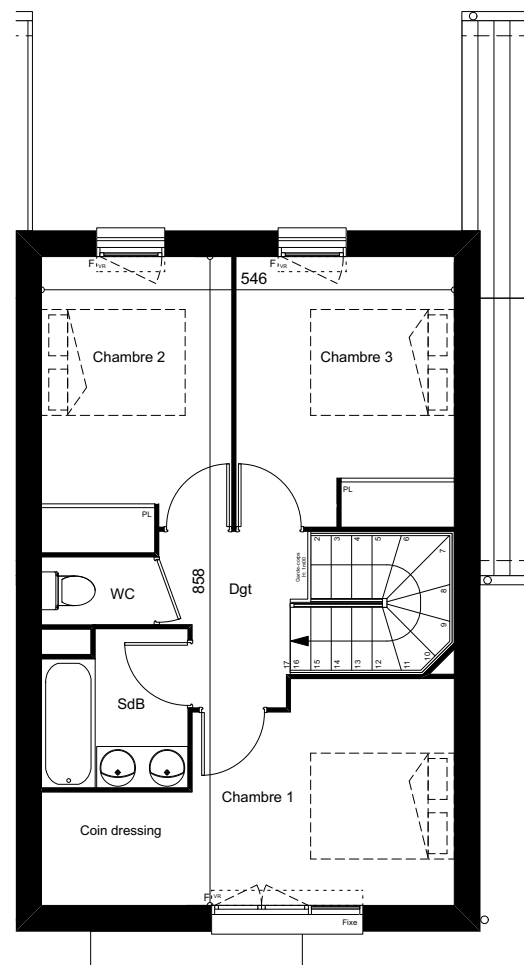
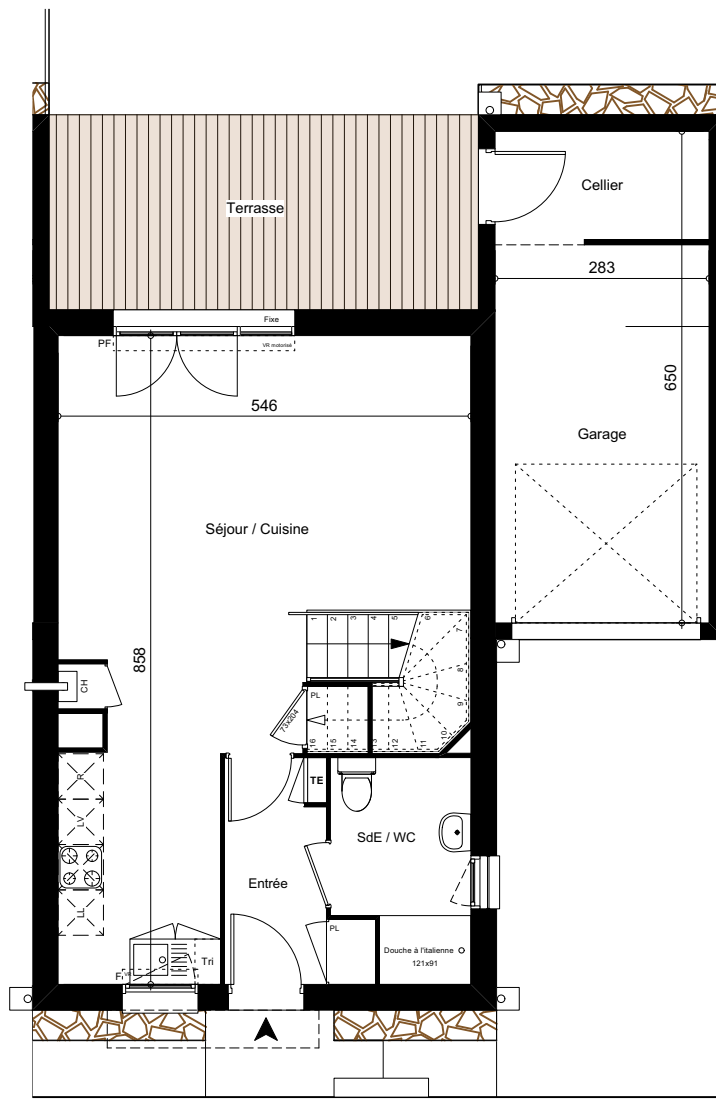




LES DEMEURES DE LA POINTE



0m 1m 2m 5m 10m



MAISON M25	
Type T4	
Surface du lot: 158m ²	
Entrée / pl	4,41 m ²
Séjour / cuisine / pl	32,90 m ²
Chambre 1 / coin dressing	12,83 m ²
Chambre 2 + pl	9,51 m ²
Chambre 3 / pl	10,31 m ²
SdB	3,81 m ²
SdE / WC	4,99 m ²
WC 2	1,35 m ²
Dégagement	3,78 m ²
Total Habitable	83,89 m²
Terrasse	14,65 m ²
Jardin	39,00 m ²
Garage (dont 4,05m ² de cellier)	18,20 m ²