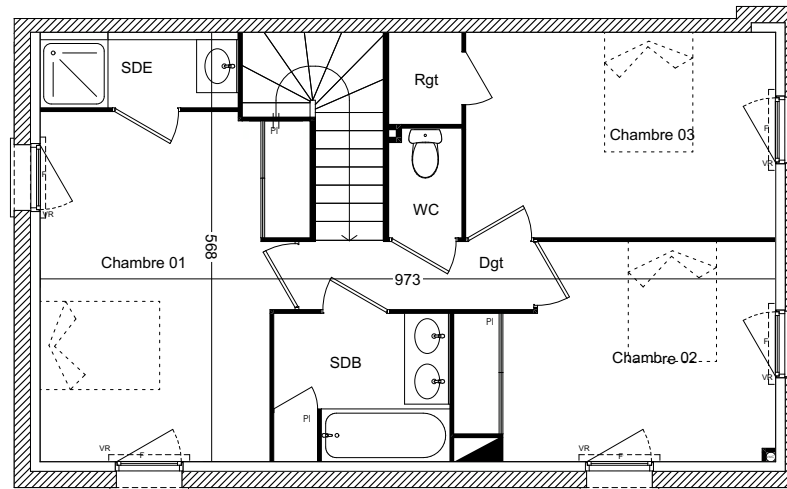


VILLAS ZEN

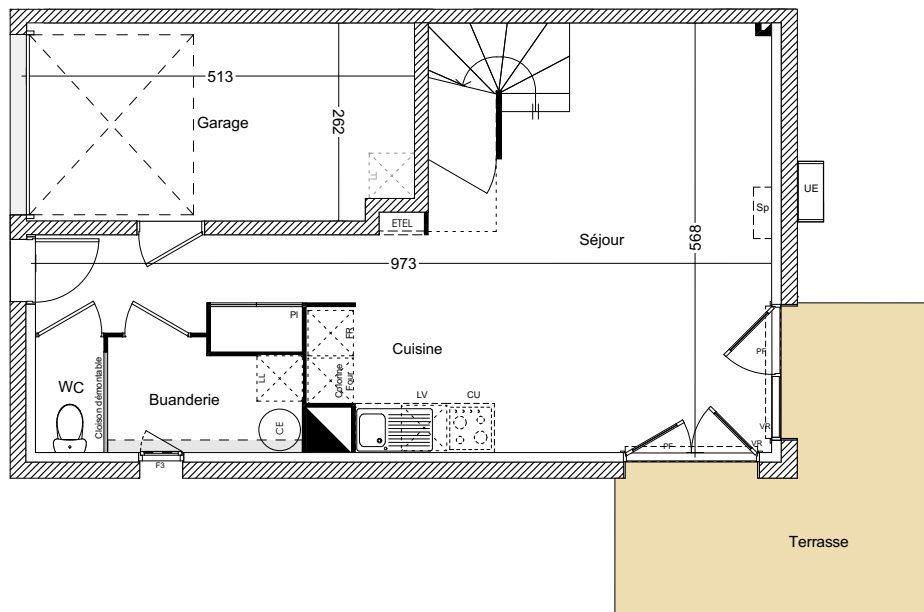
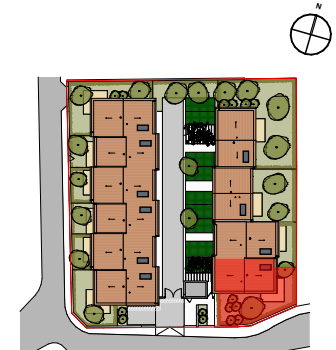
TOULOUSE · SAINT-SIMON



Plan des jardins



Plan R+1



Plan RDC

0 1 2 3m

VILLA N° 10 Type T4D	
Entrée/Séjour/Cuisine/pl	31.88 m ²
Buanderie	3.62 m ²
Chambre 1 / pl	15.15 m ²
Chambre 2 / pl	11.11 m ²
Chambre 3 / pl	12.33 m ²
SDE	2.62 m ²
SDB	4.57 m ²
WC 1	1.37 m ²
WC 2	1.40 m ²
Dégagement	2.79 m ²
Total Habitable	86,84 m²
Terrasse	11.90 m ²
Jardin	env 64 m ²
Garage	12.94 m ²

0 1 2 5 10m

